

Savvion BusinessManager™ Platform

Savvion BPM Studio™

A rich application development environment for creating effective business processes

Overview

Fundamental to the Savvion BusinessManager platform, Savvion BPM Studio provides a rich development environment for application developers and technology-savvy business users. With Savvion BPM Studio, users can see and influence how business processes exchange information, which systems will be touched, how databases from different applications will interact, and what data will be presented. Savvion BPM Studio is IT's process sandbox within Savvion BusinessManager.

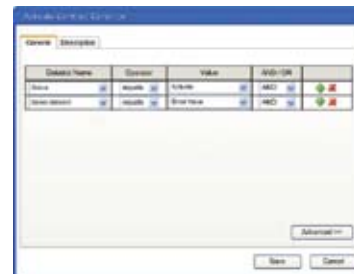
The Eclipse-based Savvion BPM Studio allows users to develop processes that can interact with a wide variety of external applications, across platforms, across organizations and via web services. Built on a solid foundation of Java and XML, Savvion BPM Studio is comprised of six key components:



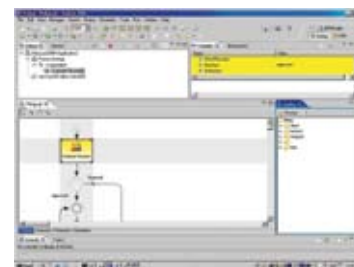
Process Designer

The Process Designer provides an elegant centralized user interface for assembling process driven applications. Users drag and drop components to create process solutions. The Process Designer is completely compatible with objects stored in the reusable components library which makes it fast and easy to leverage enterprise best practices.

A built-in expression builder provides people with an easy way to describe their decision flow logic. This logic can be extended with scripting by technical experts if more complex logic is required.



The Savvion BPM Studio includes a debugging ability which makes it easy for Solution Developers to ensure high solution quality before deployment. It enables detailed adapter testing, rules validation, and script debugging to ensure that process revisions which automate key functions are as error-free as possible.



Rules Wizards Framework

Central to the efficacy of Savvion BPM Studio, the Rules Wizards Framework allows users to implement simple or complex rules that can be used in a current process, a specific work step, or combined to create new rule sets.

Grouped by categories, the Wizards Framework provides rules covering most common functional requirements of work steps and business applications. Rules categories exist for:

- Notification
- Metrics
- Task Management and Routing
- Integration
- Alerts

Component Palette

Based upon Business Process Modeling Notation (BPMN)—the accepted standard for drawing business processes—the Component Palette provides a single pane for easy diagramming of business process flows. Whether applying business shapes, performers (the who or what of a business process), layout, notes or rules to a process, you can access these components from this task pane.

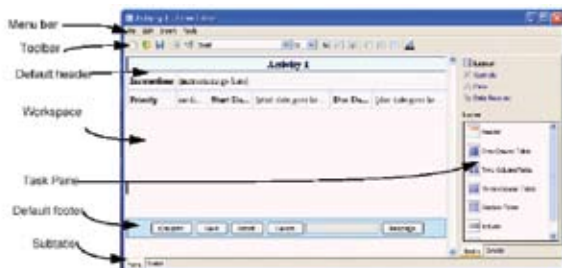
Resource Browser

Savvion BPM Studio's Resource Browser provides a big-picture view of processes and what is in your particular project. You can view a hierarchical view of all files that make up an active project, or display the structure of a selected process—showing performers and rules assigned to the overall process or any of its component worksteps. In addition, you can use the UDDI browser feature to find web services or the managed adapter browser feature to find any adapters which you have created before.

The resource browser also gives you access to the Savvion Reusable Components Library. This server side repository makes all of the organization's best practices available at a macro and granular level. Users can easily check in and check out models, business rules, data fields (dataslots), adapters, forms and web applications. It contains all relevant information about those components and provides version control features including check in/check out, release management, source control and audit trails for keeping track of changes and improving reuse.

Forms Designer

Directly integrated with Savvion BPM Studio, the Forms Designer enables users to further customize the default presentation page that users see on-screen for each process work step. Headers, multi-column tables, control formatting (text fields, drop-down lists, images, etc.) and datasource binding can all be configured using the WYSIWYG Forms Designer and the result can be previewed in a web browser before deployment.



Simulation Engine

Savvion BPM Studio's powerful integrated Simulation Engine allows users to simulate a process business flow before actual deployment. The Simulation Engine provides:

- **Faster testing for design flaws** – A process instance can be run a few times or a few thousand times directly within Savvion BPM Studio—negating the typical testing requirement for two servers (one for production, one for testing) and translating into a dramatically reduced deployment timeline.

- **Accurate estimation of resources cost** – By defining quantitative resources (e.g., equipment, electricity, labor) and measurement units (\$USD, kW hours, man-hours, etc.)

Savvion BPM Studio can create an accurate estimate of how much the process will cost or how many resources the process will require.

- **Proactive identification of bottlenecks** – The Simulation Engine keeps track of the number and status of instances in the waiting queues as a simulation is run and indicates when a bottleneck occurs, i.e., when a workstep had to wait for a performing resource to be released. Armed with this information, developers can optimize the process flow before deployment to ensure a smooth implementation.

- **Better testing randomization** – To support the full range of testing possibilities, the Simulation Engine supports two types of testing randomization: randomizing the time of intervals between process instances and randomizing the duration of work time for a specific work step in the process. Depending on the simulation requirement, the following probability distributions can be assigned: Constant distribution, Exponential distribution or Normal distribution with a standard deviation.

Web Services and W-S Security

Savvion BusinessManager is ideal for organizations pursuing a Service Oriented Architecture (SOA). All process solutions created in Savvion BusinessManager are exposed as web services. Savvion BusinessManager acts as a robust service orchestration mechanism as leveraging external web services is quick and secure. The Savvion BPM studio fully supports SOAP message testing,

complex datatype transformation and mapping, and multi server deployment configuration. The platform supports W-S Security natively, including full support of Username tokens, timestamps, SAML Tokens, digital signatures, and Message Encryption.

Savvion BPM Studio Technical Matrix

Savvion BPM Studio uses the Eclipse integrated development environment (SDK version 3.1.2), a comprehensive cross-platform environment providing a stable, universal platform for application development.

Savvion BusinessManager Version

- SBM 7.0

Operating Systems

- MS Windows 2000 Professional/Advanced with Service Pack 4
- Windows XP Professional SP2

Note: Savvion BPM Studio is not supported on Windows 95 or Windows 98.

Disk Space Requirements

- The Savvion BPM Studio client requires at least:
- 300 MB of local disk space
- 512 MB RAM

Supported Database Connectivity (via JDBC Driver)

- Oracle 9i (9.2.x) and 10g (10.2.x)
- Microsoft SQL Server 2000 SP4
- IBM DB2 8.2.x
- Sybase 12.5

Java Standard:

- J2SDK1.4
- J2EE 1.3/1.4



5104 Old Ironsides Drive
Suite 205
Santa Clara, California 95054
Toll free: 888-544-5511
www.savvion.com